

HARMFUL ORGANISMS REGULATED BY THE PLANT PASSPORT SYSTEM IN EU - CASE STUDIES -

Gianluca Governatori



VIRUSES



Plum Pox Virus

Virus: Potyviridae

HOST PLANTS

Prunus sp.





Plum pox virus

13/03/2020 10:02:17

Hosts

Major

Prunus armeniaca

Prunus domestica

Prunus persica

Prunus salicina

Minor

Prunus

Prunus besseyi

Prunus cerasifera

Prunus dulcis

Prunus incisa

Prunus mume

Prunus tomentosa

Unclassified

Prunus laurocerasus

Prunus spinosa

Incidental

Prunus avium

Prunus brigantina

Prunus curdica

Prunus domestica subsp. italica

Prunus glandulosa

Prunus holosericea

Prunus japonica

Prunus mandshurica

Prunus maritima

Prunus nigra

Prunus sibirica

Prunus simonii

Prunus triloba

Prunus x blireana

Prunus x cistena

Artificial

Chenopodium schraderianum

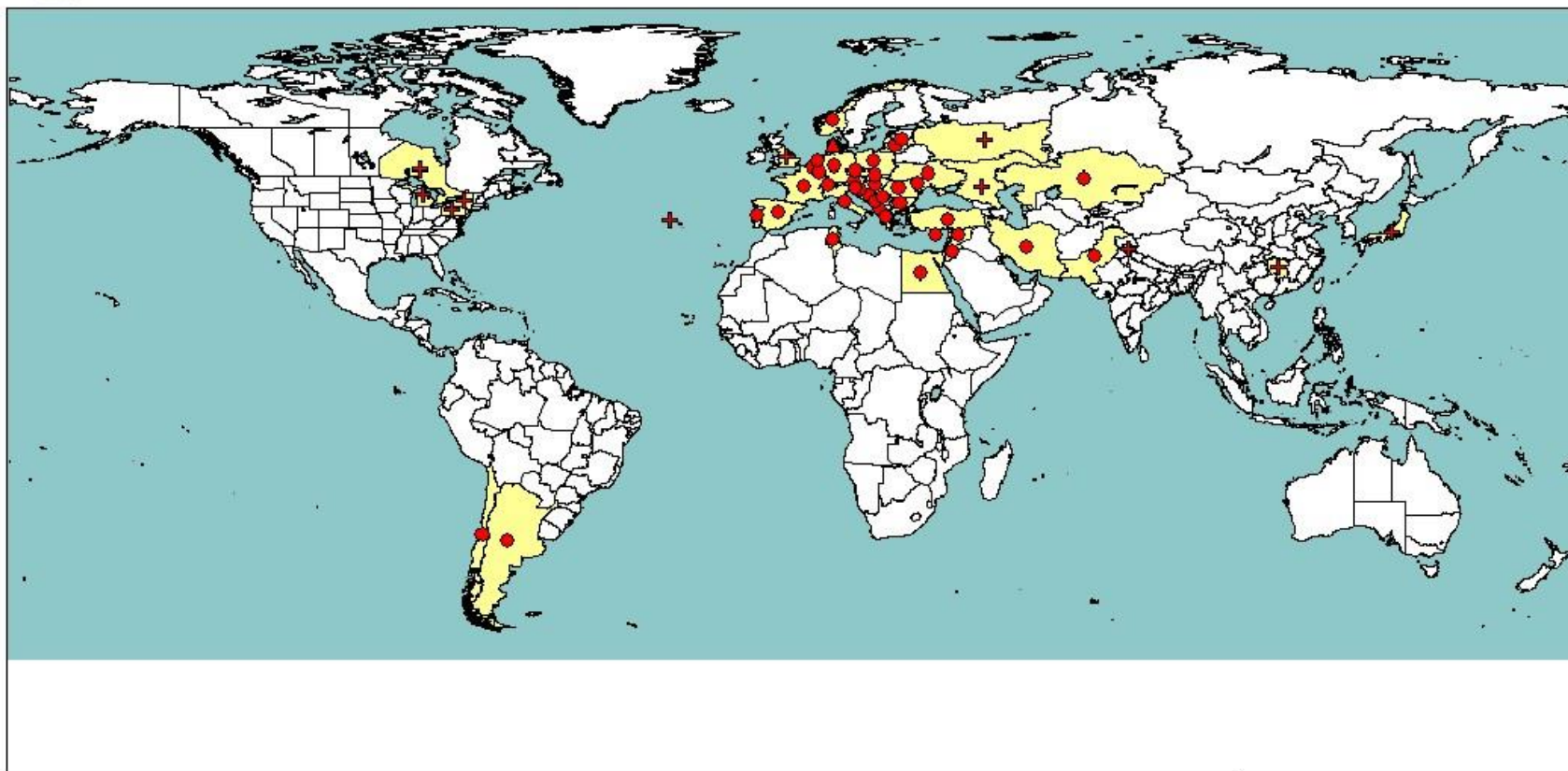
Pisum sativum

Prunus cerasus



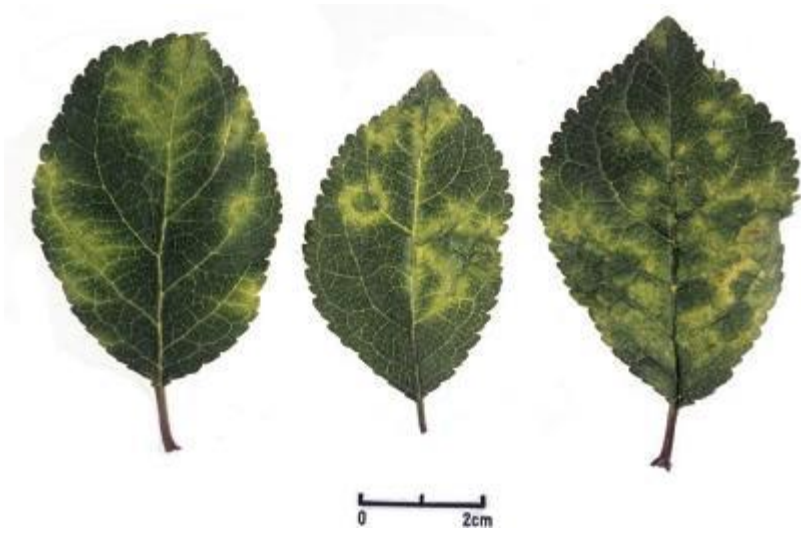
Plum pox virus

EPPO Code : PPV000



Legend

- Present (national record)
- ✚ Present (subnational record)
- ▲ Transient



BACTERIA



Erwinia amylovora

Bacteria: Enterobacteriaceae

HOST PLANTS

Rosaceae





Erwinia amylovora

ERWIAM

Hosts

Major

Cotoneaster bullatus

Cotoneaster dammeri

Cotoneaster lacteus

Cotoneaster lucidus

Cotoneaster microphyllus

Cotoneaster moupinensis

Cotoneaster salicifolius

Cotoneaster x watereri

Crataegus monogyna

Crataegus oxyacantha

Malus domestica

Pyracantha crenatoserrata

Pyrus communis

Sorbus aria

Stranvaesia davidiana

Rubus idaeus

Minor

Amelanchier alnifolia

Amelanchier canadensis

Chaenomeles

Cotoneaster

Crataegus

Cydonia oblonga

Eriobotrya japonica

Malus

Mespilus germanica

Pyracantha

Pyrus elaeagnifolia var. kotschyana

Sorbus

Wild/Weed

Pyrus

Artificial

Rosa

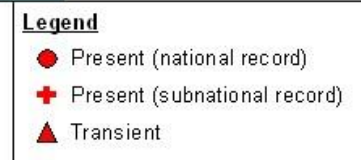
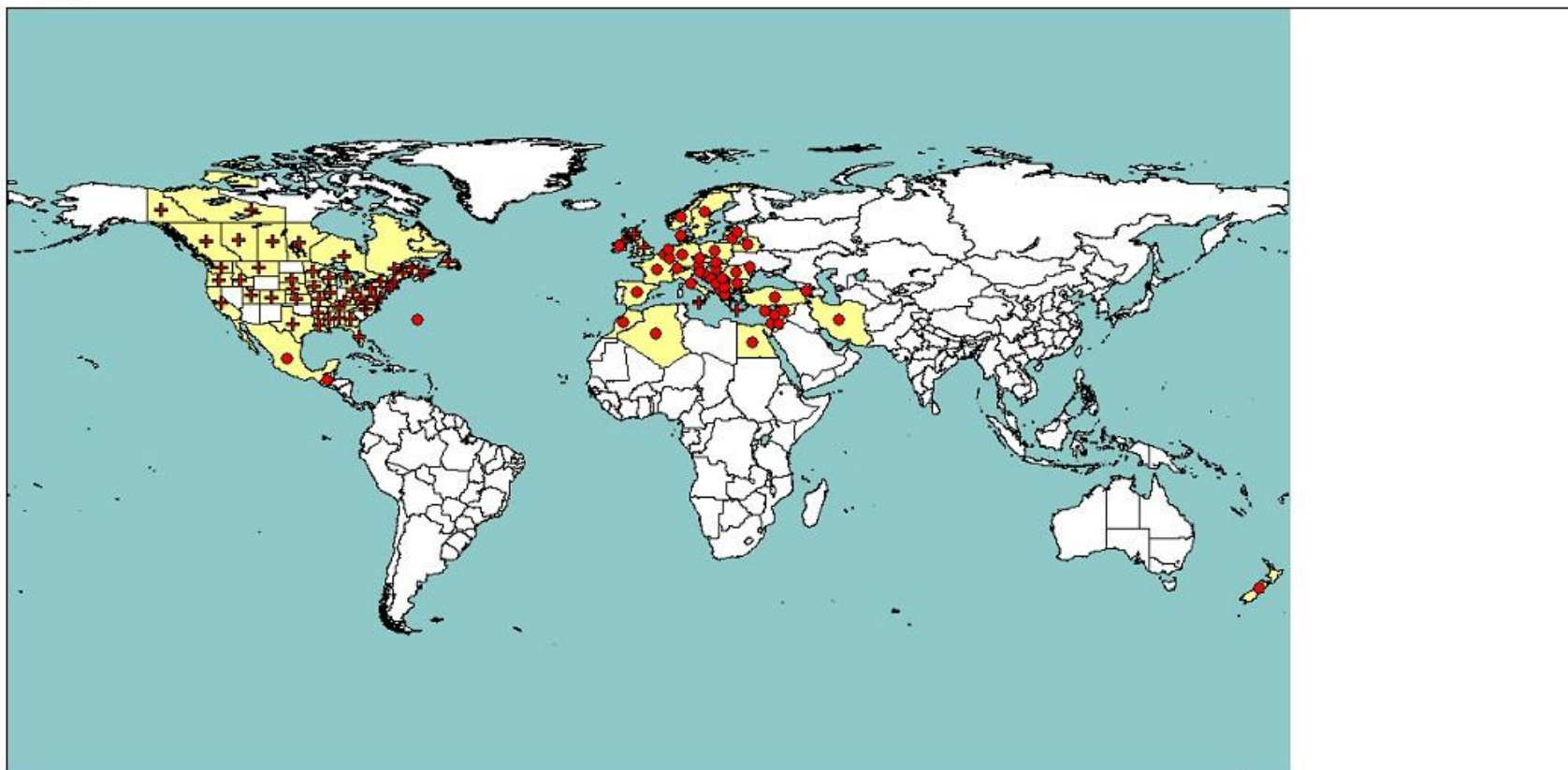
2 / 2

(c) EPPO PQR - Generated 28/03/2012 15.44.43



Erwinia amylovora

EPP0 Code : ERWIAM





(PSEUDO)FUNGI



Phytophthora ramorum Werres, De Coek & Man in 't Veld
Oomycetes: Peronosporaceae

HOST PLANTS

Viburnum sp., *Camellia* sp., etc.





Hosts

Major

Larix kaempferi

Lithocarpus densiflorus

Rhododendron

Rhododendron ponticum

Umbellularia californica

Viburnum

Minor

Griselinia littoralis

Magnolia stellata

Quercus agrifolia

Quercus chrysolepis

Quercus kelloggii

Quercus phillyraeoides

Unclassified

Larix decidua

Incidental

Abies grandis

Abies magnifica

Abies procera

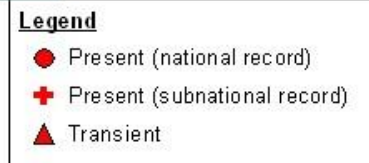
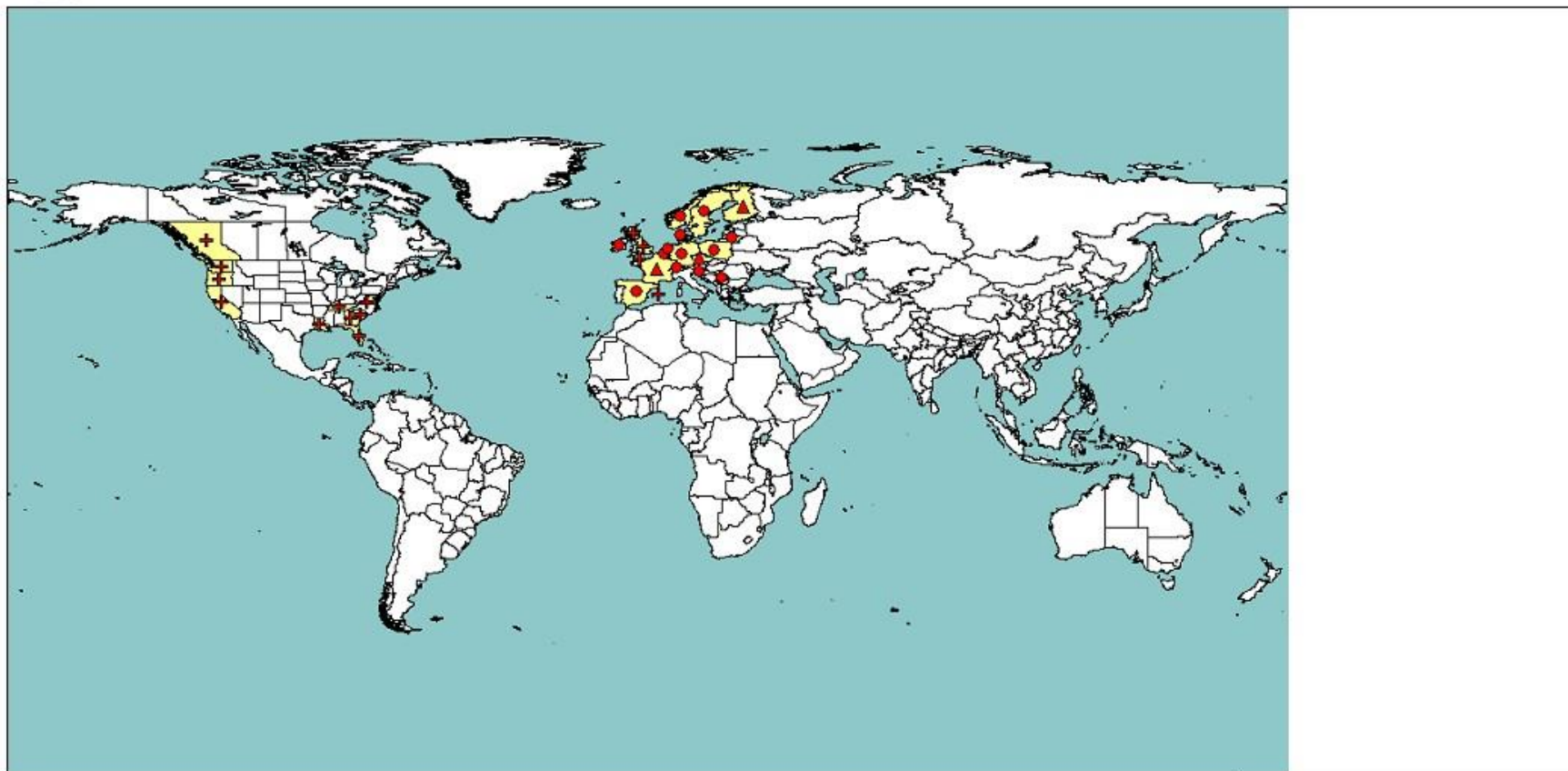
Picea sitchensis





Phytophthora ramorum

EPP0 Code : PHYTRA







INSECTS



Anoplophora chinensis (Forster)
(= *Anoplophora malasiaca* (Thomson))

Insecta: Coleoptera: Cerambycidae

HOST PLANTS

Many species (Acer, Citrus, Cryptomeria japonica, Populus, Salix, etc.)





Hosts

Major

- Acer
- Acer palmatum
- Aesculus hippocastanum
- Alnus
- Betula
- Carpinus
- Citrus
- Citrus limon
- Citrus paradisi
- Citrus reticulata sensu stricto
- Citrus sinensis
- Corylus avellana
- Cotoneaster
- Fagus
- Lagerstroemia
- Malus
- Platanus
- Populus
- Prunus
- Pyrus
- Salix
- Ulmus

Minor

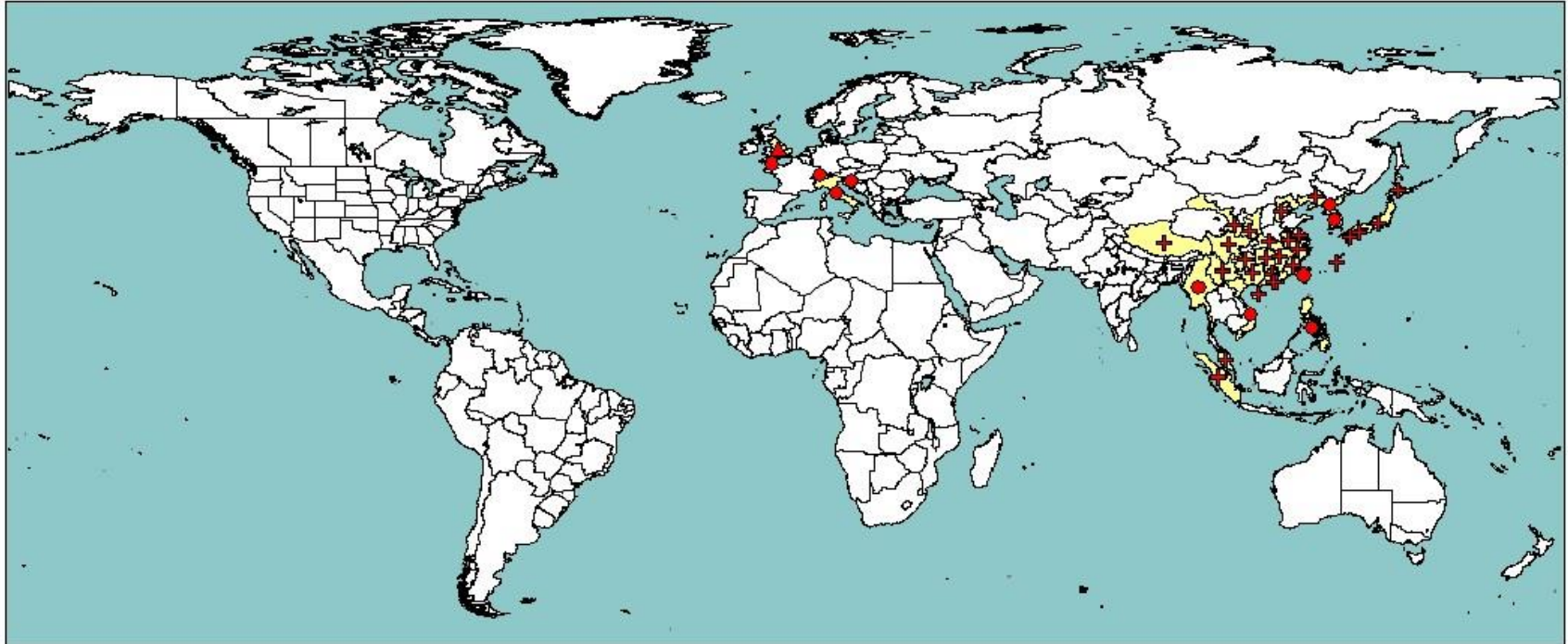
- Casuarina
- Cornus
- Crataegus
- Cryptomeria japonica
- Ficus
- Hibiscus
- Litchi chinensis
- Mallotus philippensis
- Melia azedarach

- Morus
- Rosa
- woody plants



Anoplophora chinensis

EPPO Code : ANOLCN



Legend

- Present (national record)
- ✚ Present (subnational record)
- ▲ Transient





M. Masper



M. Maspe



M.Maspero





M. Maspero

Anoplophora glabripennis (Motschulsky)

Insecta: Coleoptera: Cerambycidae

HOST PLANTS

Mainly *Populus* and *Salix* (*S. babylonica*, *S. m*





Anoplophora glabripennis

ANOLGL

Hosts

Major

Acer negundo

Acer platanoides

Acer pseudoplatanus

Acer saccharinum

Acer saccharum

Acer truncatum

Aesculus hippocastanum

Betula

Populus

Salix

Minor

Alnus

Fagus

Fraxinus

Malus domestica

Morus alba

Platanus

Prunus serrulata

Ulmus

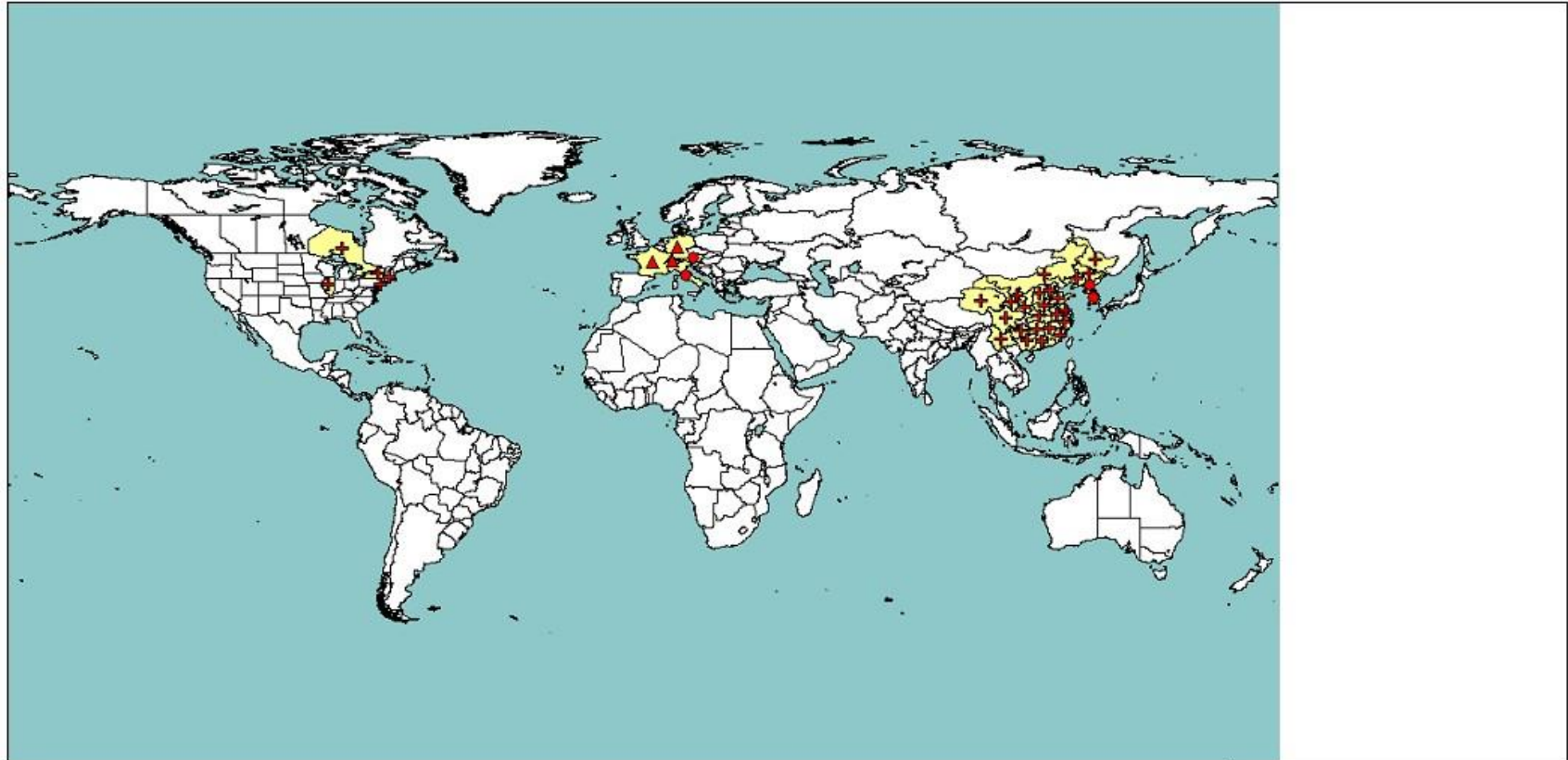
deciduous woody plants

woody plants



Anoplophora glabripennis

EPPO Code : ANOLGL



Legend

- Present (national record)
- ✚ Present (subnational record)
- ▲ Transient





Symptoms





Anoplophora spp.

Adult and larva of *Anoplophora* sp.



***Anoplophora* spp.**



Anoplophora spp.



Mnogo vam hvala!

